

**Wellis<sup>®</sup>**

THE WORLD'S GREENEST SPAS

 **Life** 2023



**Wellis**<sup>®</sup>  
THE SENSE OF NATURE

EUROPE'S LEADING SPA MANUFACTURER  
[WELLIS.COM](http://WELLIS.COM)



## ABOUT US

Since the company was founded in 2003, more and more people are choosing Wellis products in the whole world. The increasing demand for a healthy lifestyle increases the demand for quality wellness products. Thanks to continuous development and growth, Wellis has now become the largest hot tub manufacturer on the European market and already has a significant share in the American market.

We produce hot tubs, swim spas, their associated thermal covers, and spa side cover panels at a total area of 30,000 m<sup>2</sup>. The construction and continuous expansion of the huge plant, which

is equipped with modern production tools was motivated by the growing market demand and the pursuit of quality manufacturing technology. Our products are stored in several warehouses. We currently sell 30,000 Wellis hot tubs per year at more than 1000 points of sale worldwide.

We have been developing our new product line for more than 3 years. Countless licences, thousands of work hours, and a multitude of our own innovations that we are already extremely proud of will be represented in our new models. Faithfully to our company, we want to

introduce perfect, user - friendly and environmentally friendly products to the market, as it is increasingly important today to pay attention to the needs of our customers, but at the same time protect our Earth. The primary goal of our company is to provide the same or even better wellness experience for our customers using as little energy as possible. There will be significant changes in the technological structure of our spas, and they will also get a renewed design.



*„I was an active teenager; I travelled the world and was continuously on the hunt for new business opportunities. I worked on importing jeans from Asia and I always wanted to learn and expand. The real success in business found my brother and me in producing spas and together we created Wellis, Europe's leading hot tub company. In the beginning, we imported spas and hydromassage tubs as ready-made, pre-assembled products. The year 2010 was to be a gigantic milestone in Wellis's and our lives, which is when we started manufacturing spas.*

*We started building the factory in the spring of 2008, and a few months later the global financial crisis broke out, then the great economic recession started. Everyone tried to talk me out of starting to manufacture hydromassage hot tubs in the middle of the crisis, since they absolutely count as a luxury item. The company's management didn't endorse starting manufacturing, either, but I decided to go for it. To put it delicately, neither starting to make the products, nor introducing our own hot tubs to the European market was easy. Fortunately,*

*we could say the rest is history, since our efforts were crowned by such success that manufacturing products ended up pulling the company out of the crisis. As our next great leap, I would name breaking into America, the native land of hot tubs, where in the last 2-3 years we have been growing our roots and introduced the brand named Wellis. Parallel to expanding our business in the USA, we would like to grow on. It is a glorious thing to be on the cutting edge, but it's an even greater responsibility!”*

Zsolt Czafik CEO and Akos Czafik CEO of Wellis Hungary





# GREEN ENERGY

## SUSTAINABLE PRODUCTION TECHNOLOGY

Instead of long-term visions, a sustainable economy has become part of everyday life at the company. In the last few years, our company has placed increasing emphasis on the elements of the environmental-friendly and sustainable model.

Our efforts are based on two essential pillars: the first one is to optimize our production process, and the second is to educate our customers about energy and water-saving aspects, considering the environmental factors.

Here are some processes which were introduced into the daily life of our company:

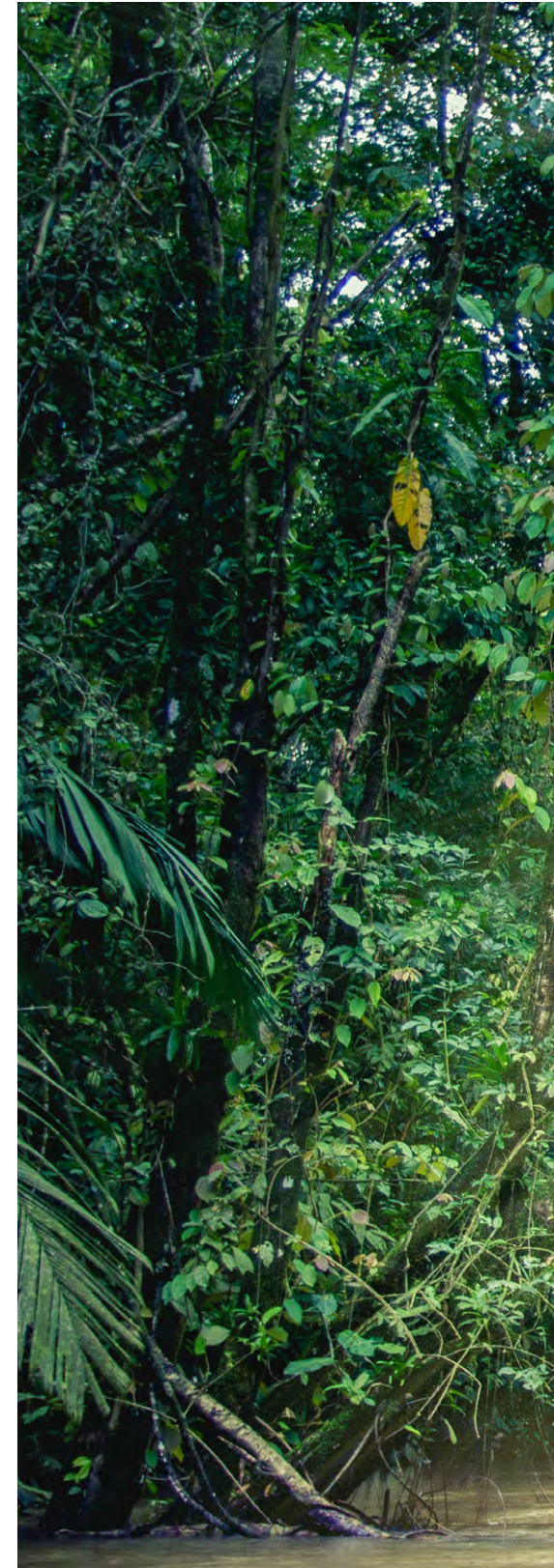
- Recycling unnecessary substances with a special shredder.
- Producing abs (acrylonitrile-butadiene-styrene) from recycled plastic.
- Using low consumption pumps in spas.
- Various developments in the name of renewable energy, like integrating solar systems into our products.
- Shortening transport routes around the world and coordinating production and sales activities.
- New, energy-efficient hot tub



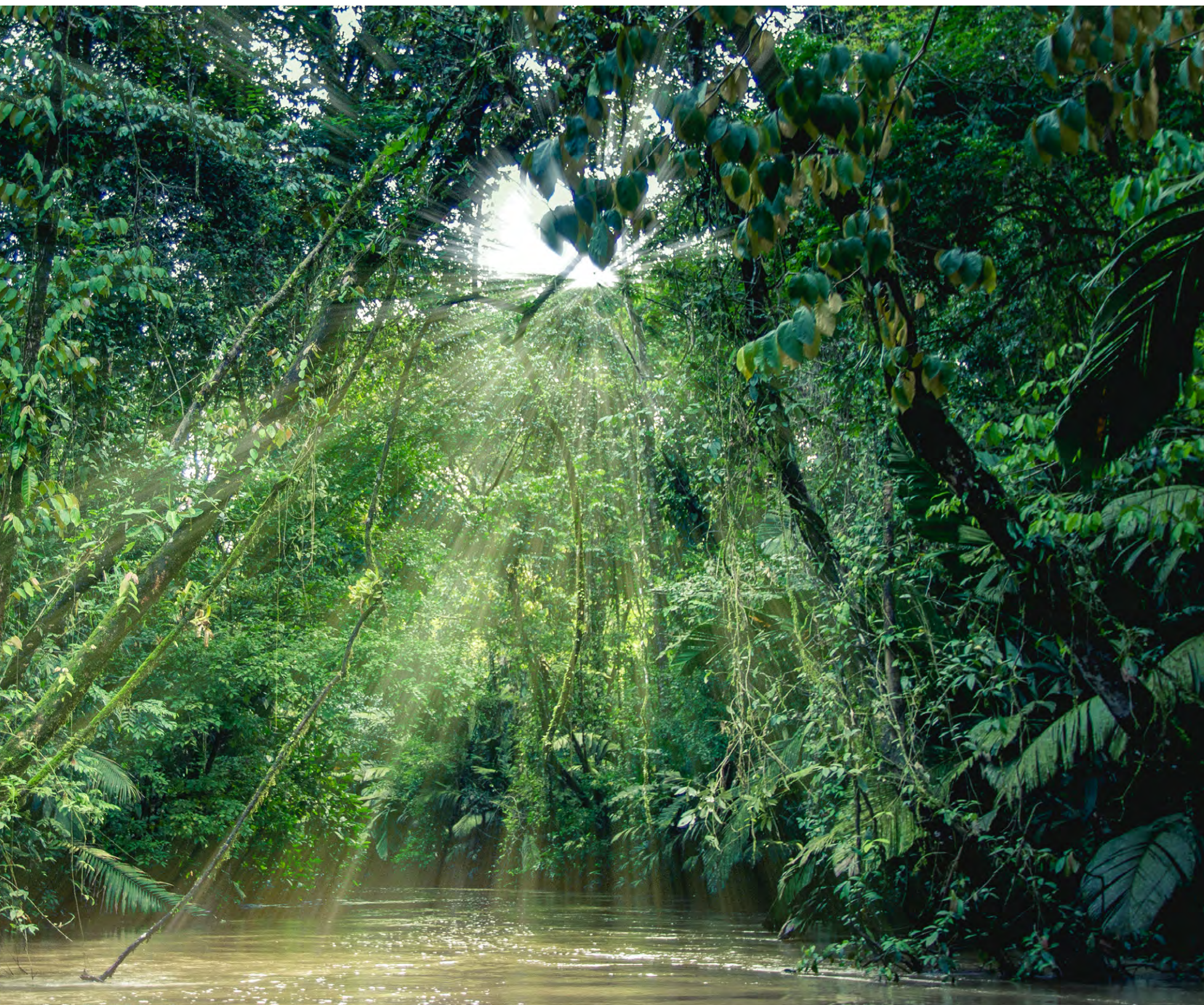
### SAVE THE RAIN FOREST

In the process of our manufacturing technology, we pay special attention to environmental awareness, so we completely eliminated the use of wood during the production and replaced it with recycled materials.

This is how we protect our rainforests and nature. In order to achieve the most effective recycling, Wellis is not afraid of technological innovations either.











01

Energy Efficiency



# QUALITY ASSURANCE

Our quality is continuously benchmarked against the highest German production Standards under the TÜV certification protocol that we subscribe to. This ensures we constantly meet and exceed all relevant International quality standards.

We are proud of this commitment to excellence and the clear differentiation from our market competitors that it affords us. Our TÜV certificate guarantees that our products are of excellent quality, and are regularly and independently monitored to meet and exceed

the highest manufacturing standards. The CE label on all our products reassures our customers that the design and build meet or exceed all relevant EU standards.



**7\***  
years guarantee  
for the plumbing

**10**  
years guarantee  
for the shell

*\*3 years standard guarantee for the plumbing, additional/plus up to 4 years extended guarantee*

# THE RESULT OF 3 YEARS OF DEVELOPMENT



The Wellis R&D team has been working for 3 years on the new product portfolio, which will be revolutionary throughout the world.

61 patents are already registered in Europe; 14 in the US. Also there is a world patent for the electric water diverter. Technology

breakthroughs result in energy-efficient and environment-friendly solutions.





**ENVIRONMENTAL  
AWARENESS  
AND SAVING ENERGY**



Energy-efficient solutions while also preferring sustainability and environmentally conscious production technologies.

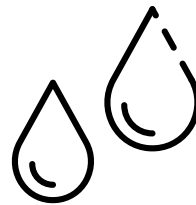
With this in mind, it was obvious that our new and renewed products would also be produced in accordance with these standards.

This is the reason our revised logo was named Life, which name will be carried on by both our product families: Peak and CityLife.

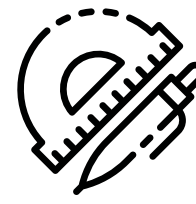
## ENERGY EFFICIENCY



## WATER TREATMENT



## DESIGN, APPEARANCE



# FOCUS ON ENERGY EFFICIENCY

**Wellis  
Makalu** 

with  
SMART-in Step system

**2.9 kWh / day**  
**370 EUR / year\***

**Bullfrog  
A7LC**

Full foam (CEC)

**3.96 kWh / day**  
**505 EUR / year\***

**Hot Spring  
Envoy**

Full foam (CEC)

**4.45 kWh / day**  
**568 EUR / year\***

**Jacuzzi  
J-475**

(CEC)

**5.47 kWh / day**  
**698 EUR / year\***

**Chinese  
spa**

(CEC)

**10.00 kWh / day**  
**1 277 EUR / year\***

\*Sources: CEC - California Energy Commission; Wellis - Based on Wellis measurements with Smart-In Step System, California Energy Commission data: water 39 °C, air 17 °C, filtering 1x2 hour.  
1kw = 0.35 cents average calculated: [https://ec.europa.eu/eurostat/statistics-explained/index.php/Electricity\\_price\\_statistics](https://ec.europa.eu/eurostat/statistics-explained/index.php/Electricity_price_statistics)







# NEW WATER DIVERTER:

## WOW SYSTEM

Our improved electric water diverter replaces the large manual diverter. Our device fills the same function and comes with a smaller panel with buttons for easy use.

The electric water diverter makes for a gentler massage experience due to the fact that after activating it, the speed of the water increases gradually. Thanks to the automation, we've built a new massage experience into the tub: the gradual changing of the direction of the massage every five seconds creates a pulsing effect, providing an even more authentic feeling of a traditional massage.

Concerning the water current, we combined the massage strength of two older-model

massage pumps in only one by straightening the pipes and installing the new water diverter. This way, the consumption of energy while in use has been reduced to half the previous amount.

Wellis made an energy efficient water diverter, which patent is registered in 152 countries.

Compared to our competitor's solution, it has 23% higher pressure with approx. 30% less energy consumption. Moreover, we compared it to our previous models, and the results were **75% higher pressure** with approx. **41% less energy** consumption.

### WELLIS EVEREST WITH OLD WATER DIVERTER

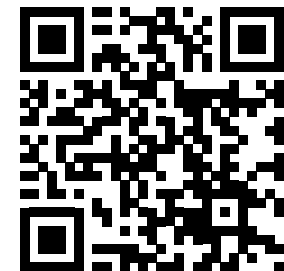
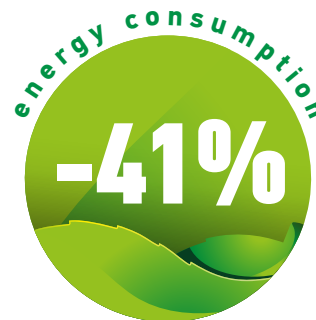
To reach 12 PSI massage feeling needed:

2x3HP + 2x2HP pumps and 7400 W

### WELLIS EVEREST LIFE WITH NEW DIVERTER

To reach 12 PSI massage feeling needed:

2x3HP pumps and 4400 W



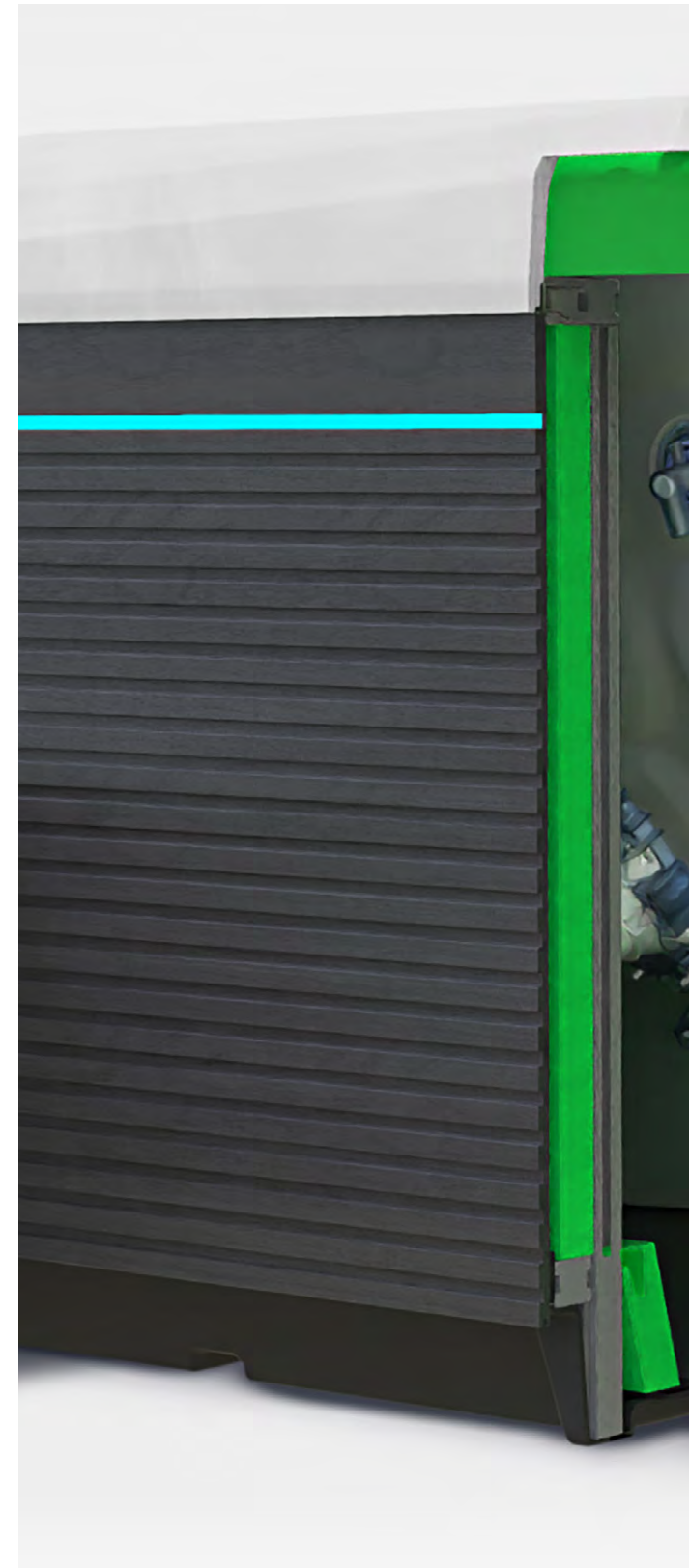
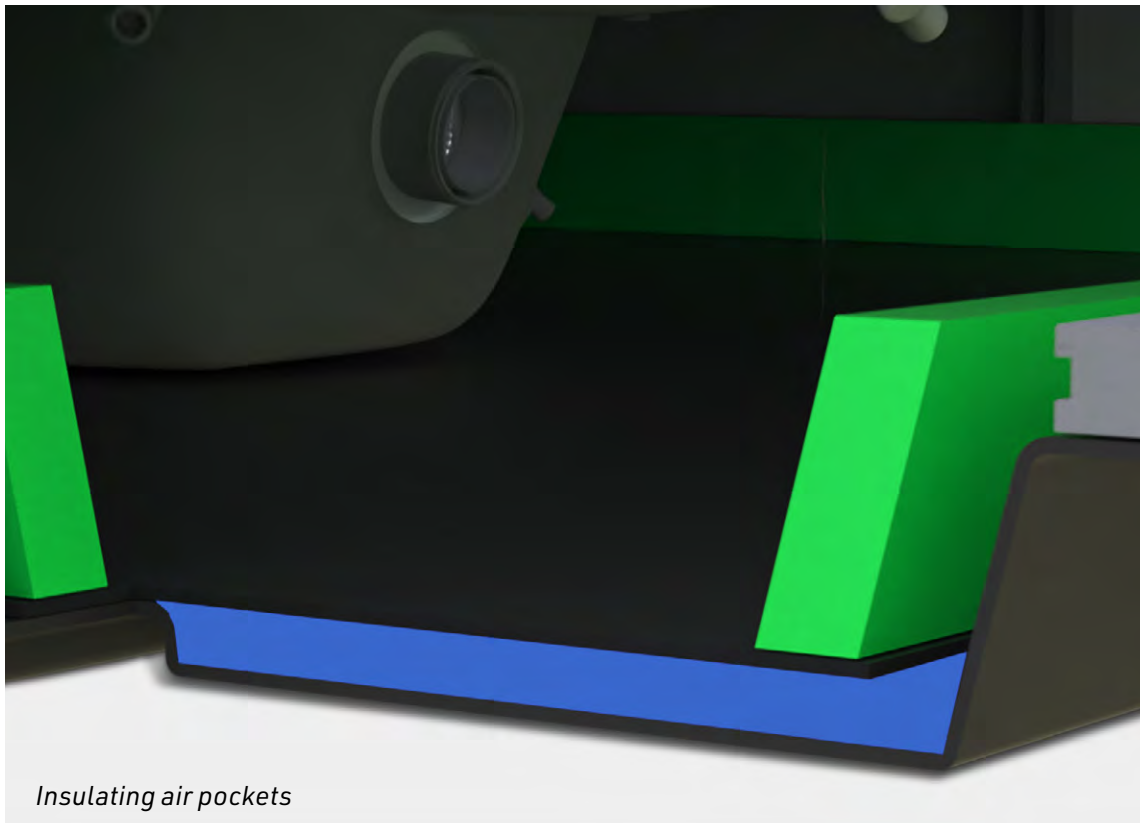
*New Life Line Video*

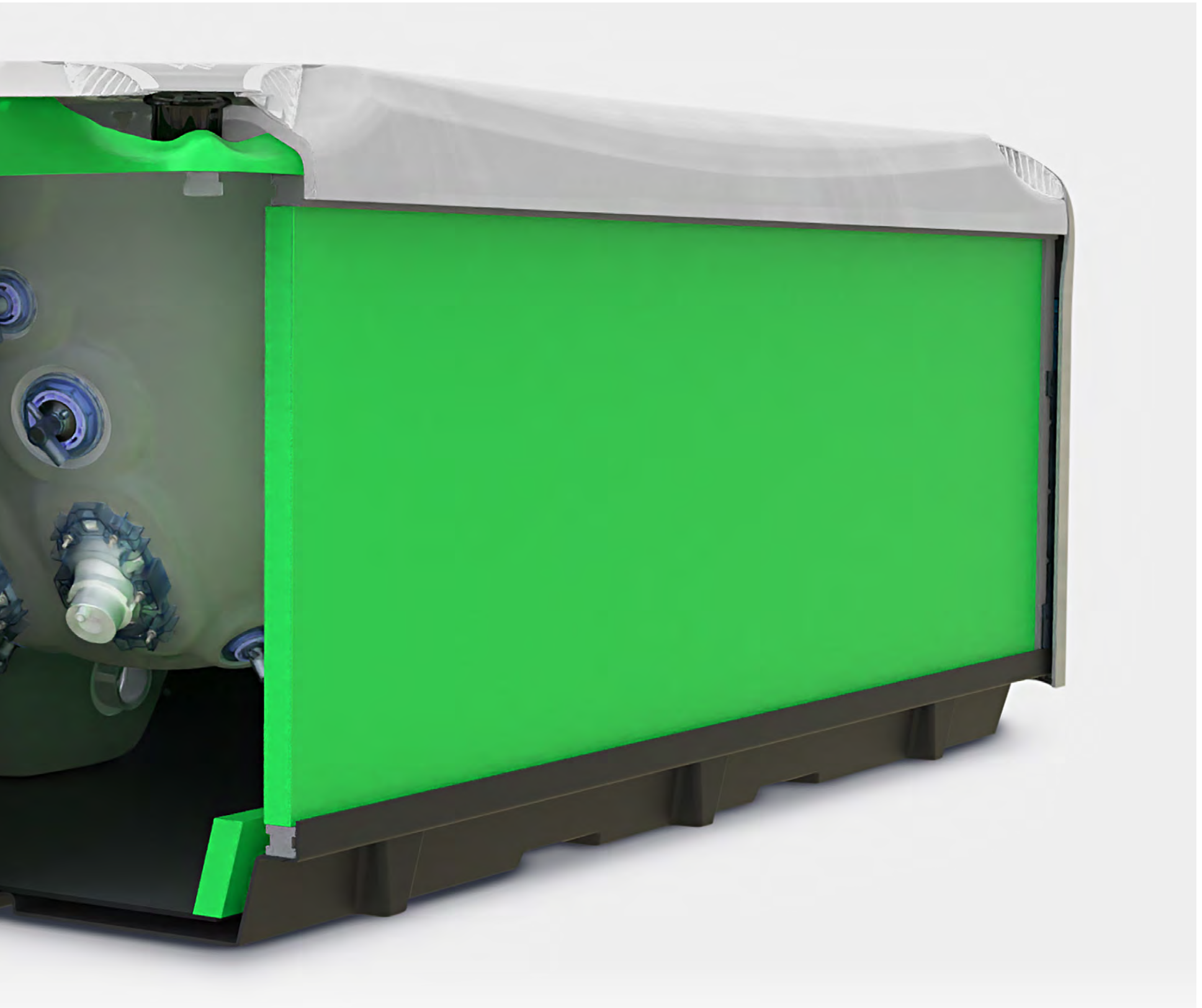
# NEW SCANDINAVIAN INSULATION

All our spas were given a new kind of Scandinavian insulation 3.5 cm of **POLYFOAM** boards have been installed into the spa's holding frame instead of fastening them to the outer casing. It is dimensionally accurate for the frame's inner measurements and can be easily in- or uninstalled.

The foam insulation under the rim has also been exchanged for an aesthetically more pleasing 3.5 cm **POLYFOAM** insulation.

In the tray, instead of the previous **POLYFOAM** insulation, we implement the best insulator we could find: the air. We achieved this by installing an ABS sheet 3 cm from the bottom plate, creating insulating air pockets.







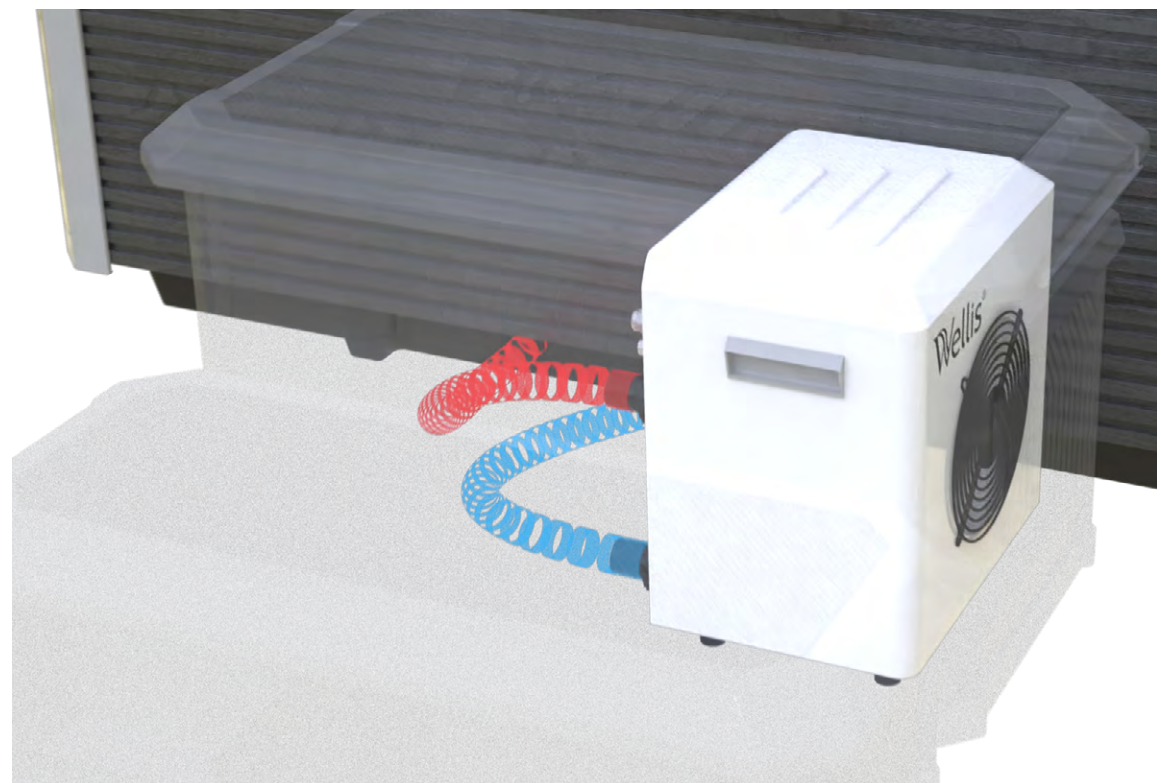




# SMART-IN STEP SYSTEM

The heat pump can be stowed under the larger step. The heating of the water can be maintained more cost efficiently, without affecting the product's aesthetics.

The Smart-In step with a built-in heat pump can heat or cool temperatures from  $-5^{\circ}\text{C}$  up to  $+40^{\circ}\text{C}$ , through which 70-75% of heating energy may be saved. Inside the steps, we designed storage compartments, in which the users may store towels or chemicals, and there is also a compartment for charging cell phones, which comes equipped with a USB hub.





# SMARTPHONE APPLICATION

Control your spa from home or while you are on the road with the Wellis Smartphone™ app!

Available for both iPhone and Android smartphones. Set the desired temperature and other functions from your phone, before you head over to the holiday house, so that by the time you arrive you will have a heated, ready-to-use spa waiting for you, providing you with all the benefits and positive effects of a Wellis hydromassage.









02

Water Purity







# WATER PURITY

All Wellis spas use a multi-stage filtration and sanitation system that ensures crystal clear, safe bathing water with the minimum of user input.

The process starts with our special antimicrobial cartridge filters. The low energy eco-circulation pump draws spa water through these filters where any tiny particles are trapped. The antimicrobial coating then helps to destroy any bacteria that may be attached to the filtered particles, preventing growth and smells and ensuring the filters are easily cleaned and returned to service many times over.

Once the spa water has been filtered it passes through the heater and then the eco-circulation

pump. Next it is passed through sanitation device that we fit.

Although a spas bathing water can be kept safe by chemicals alone, an electronic sanitation device will greatly reduce the amount of these chemicals that are required, and hence improve the quality of the water for bathers. Every spa we make is fitted with this device: OZMIX™ system.

Our filters ensure the purification of the water several times a day, leaving no dirt on the floor. Our antimicrobial spa filter cartridges are designed to provide an unsurpassed level of leisure water cleansing.











### CRYSTAL CLEAN SYSTEM

Thanks to the pipe with a diameter of 48 millimeters, the motor circulates more water and does so faster, thus filtering the water more speedily. The new circulation jet has been designed to have 3 zones, where 2 zones are pointed downwards to stir up the sand and dirt from the bottom of the hot tub.

The zone in the upper area then directs the water into the filter.



# OZMIX™ SYSTEM

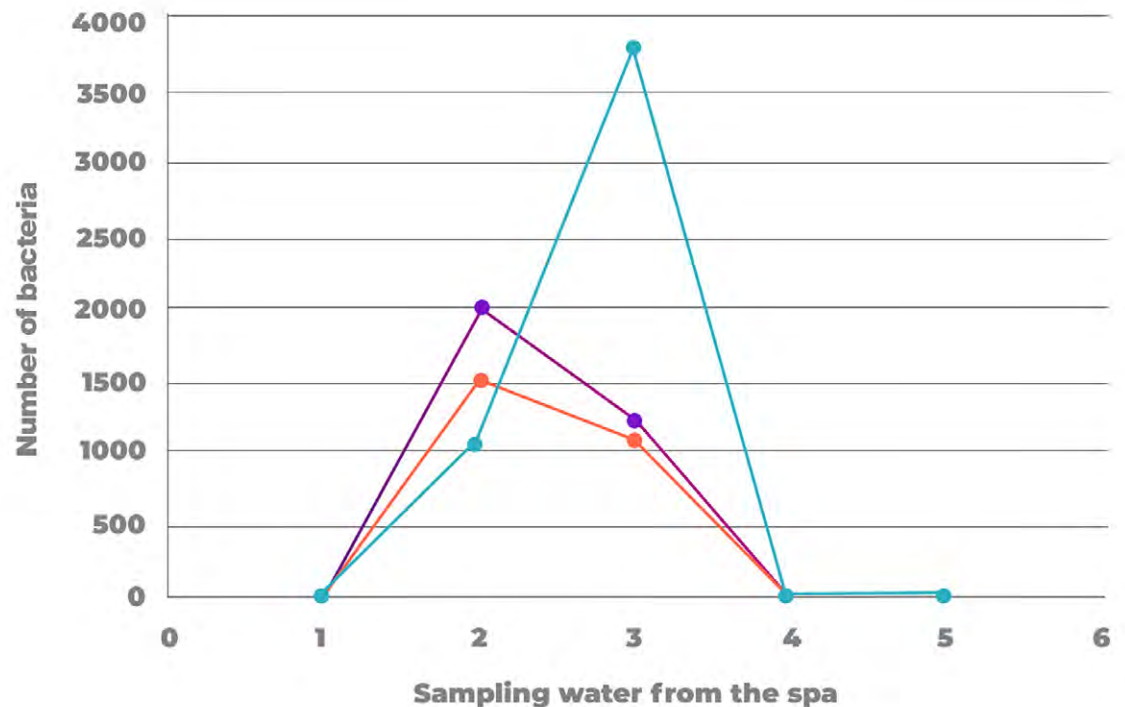
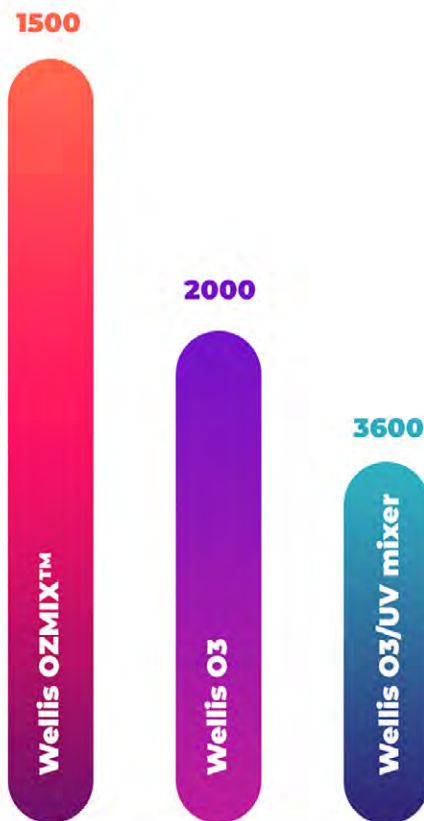
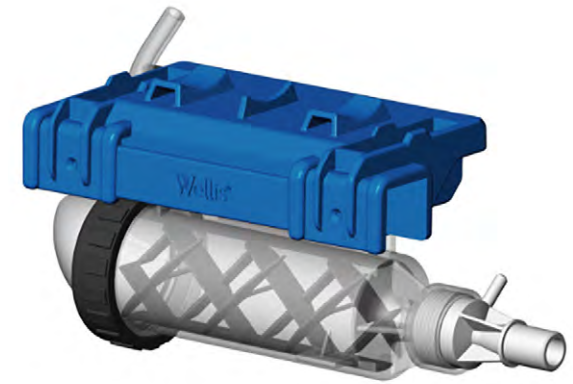
During Wellis developments, in the disinfection phase the tests showed that the ozone systems we are using are the most efficient for disinfection. The efficiency of the disinfecting effect can be increased by the mixing of ozone in the water.

To facilitate this, we have created the OZMIX™ system, that proved to be more effective than comparable disinfection systems by adding chlorine and the right amount of ph.

Our goal is to find the best possible disinfection

mode and reduce the amount of chemicals which are currently in use.

We tested the OZMIX™ system on all the bacterial strains in our hot tubs and, as in the cases above, it performed better than the other disinfection systems. For all bacteria in our hot tubs, the previously used O3 + UV showed more than 4,000 units of bacterium colonies, while after using the ozone mixer, less than half of the O3+UV test results, only a total of 1,500 units of bacterial colonies where indicated.













# IN-LINE WIS

- This useful, built-in accessory provides 24-hour monitoring of your spa's water quality status via your smartphone.
- The machinery also provides the exact and required amount of chemicals.
- Since this is a built-in system, it does not disturb us during rest, it is a completely new system, developed by Wellis
- You can download the WIS application from Google Play or App Store.



App Store



Google Play



# AQUASOUL MAX SOUND SYSTEM

## **AQUASOUL™ PRO 4.1 SOUND SYSTEM (PEAKLIFE)**

The Wellis AquaSoul™ Pro sound system features the newly developed, top-quality waterproof elements. You no longer need to bother with MP3 players, or any other cable-connected devices because the built-in receiver is true Bluetooth so its even connectable via your mobile phone.

4-channel amplifier with a Bluetooth receiver, Subwoofer (288 W), hidden - 50 W each, 2 built-in speakers - 35 W each are part of the AquaSoul™ Pro 4.1 sound system.

## **AQUASOUL SOUND SYSTEM 2.1 with subwoofer (PEAKLIFE)**

The sound system installed in PeakLife spas features the latest, high-quality, waterproof elements. Extended Bluetooth range, stronger subwoofer (300 W) modern speaker design. Can be connected via mobile phone.

## **MYMUSIC 2.0 (with 2 speakers) (CITYLIFE)**

The watertight elements installed for the myMusic™ sound system are of the latest design and highest quality. There will be no more trouble with Mp3 players, or other external units, since you can connect to the built-in receiver unit from your mobile phone via Bluetooth



*PeakLife Rim*



*CityLife Rim*







PeakLife Hidden





03

Experience and Design



# FUTURE OF DESIGN







#### **COLOR THERAPY (MOOD LIGHTING)**

Our chromotherapy system is based on lights of four different colours: green, yellow, blue, and red. These can be set to fade gently through the spectrum or, by a simple touch of the spa's control panel can be fixed on the single colour most beneficial to your mood.

#### **LIGHTSIDE™ SPA CABINET**

Wood-like, wide horizontal side and corner bars. These elements add an intimate atmosphere to the appearance of the spas. The cabinets are available in grey and brown colour. Besides this, our new spa side cabinet's futuristic look instantly flies us into the future. An LED strip runs along the side of the spa cover (PeakLife). The newly developed corner elements give a more modern and futuristic look to our new range of hot tubs.

#### **NECK MASSAGE & HEADREST**

Takes your daily stress off your shoulder and neck. Advanced ergonomics, more comfortable design. The design of the headrest follows the line of the neck and head so you can relax more comfortably in our hot tubs.

#### **FILTER HOUSING**

Our custom-made filter housing has an outstanding design, which complements the shades of the spa acrylic. Filters can be replaced easily with one move, anyone can do it easily. We made a unique, lighting design, which makes the hot tub more modern.

#### **WATERFALL**

Sit under the cascading water and enjoy a soothing neck and shoulder massage. This accessory is a new development of Wellis, there is no other product on the market that is similar to it.

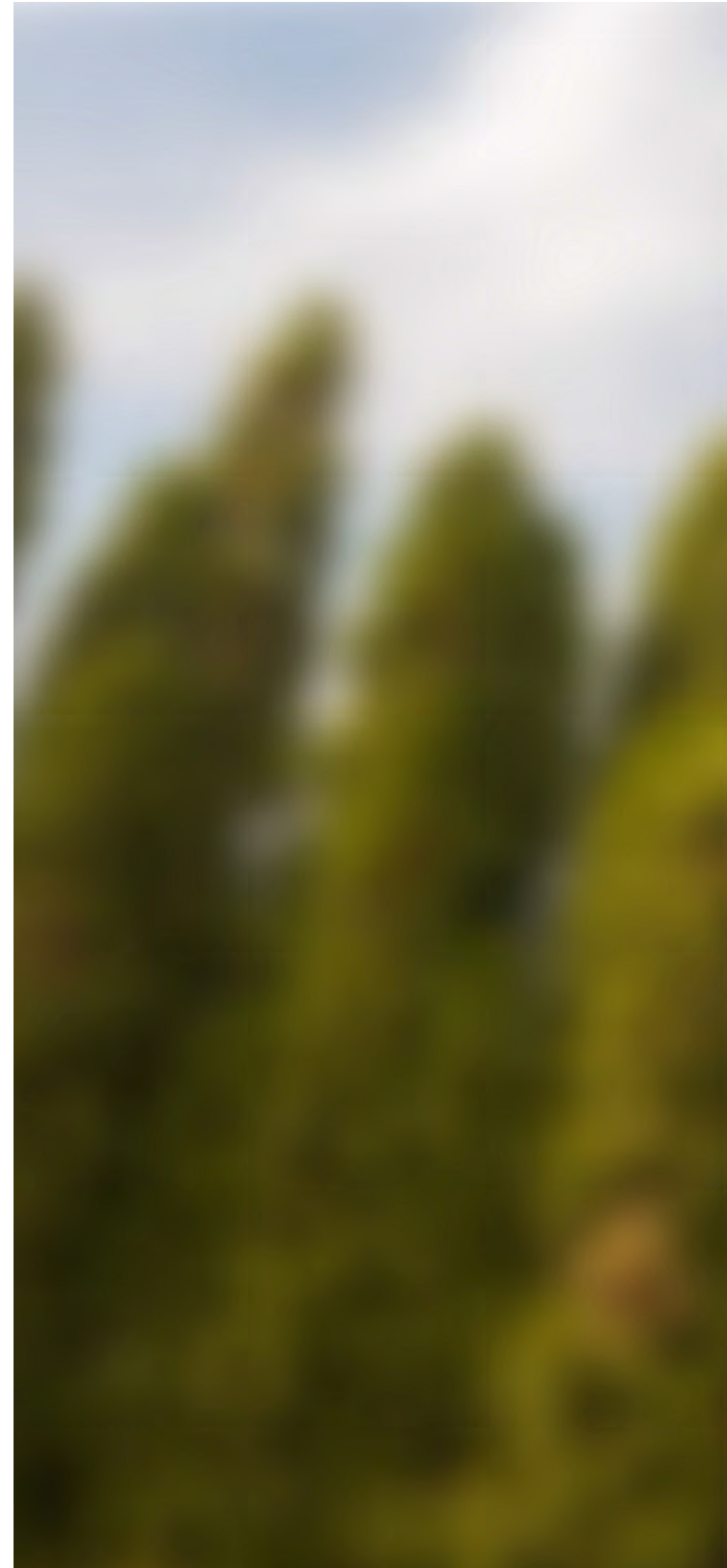
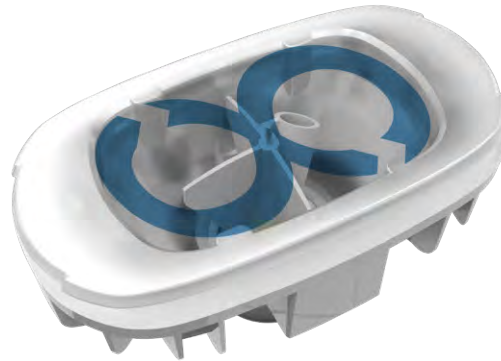






**We designed the 7" rotating infinity jet**

The infinity jet makes the massage experience even more enjoyable by massaging a larger portion of the body and doesn't only move up and down, it draws an infinite figure eight as it turns.









CHROMOTHERAPY



Recently much scientific research has been carried out to identify particular beneficial effects of each part of the colour spectrum. The application of this knowledge is now known as chromotherapy and is widely used for helping with relaxation, destressing and mood enhancement.

In our spas we call this mood lighting. Our chromotherapy system is based on lights of four different colours: green, yellow, blue and red. These can be set to fade gently through the spectrum or, by a simple touch of the spa's control panel can be fixed on the single colour most beneficial to your mood.

#### **IN.MIX COLOUR THERAPY MOOD LIGHTING**

When connected to our SmartTouch control systems, in.mix transforms our touch screen to real lighting consoles with a perfect interface. Create your personalized ambiance easily with an infinite selection of colors and a light-intensity dimmer.

In.mix can drive and control up to three light zones in or around your spa, (inner, rim, cabinet). The color selection can be independently managed or synchronized to create stunning visual ensembles.

In.mix comes with a built-in power supply and can be connected to your spa's control system. It can illuminate the water of your spa or create accent colors around it.

#### **LIGHTING JETS**

Wellis came up with countless patents for its new models, one of is the lighting jets, which is a special feature. The jets are illuminating not just themselves, but also the surface around them. The interior of the spa is more modern, its futuristic appearance is like sitting in a spaceship, there is nothing like this on the hot tub market yet. This not only gives the spa a more modern appearance, but also a larger lighting surface.

#### **RIM LIGHTING**

The rim lighting is a separately controllable lighting and design element located under the enrichments, the cup holder, the taps, and the filter housing. You can control them at the same time, they can differ from the lighting of the jets.

#### **LIGHTSIDE™ CABINET SYSTEM (PEAKLIFE)**

The LightSide™ cabinet system appears in Wellis' new spas, which includes hidden lighting under the corner elements, and an in-house developed LED strip, which runs along the side cabinet of the hot tub. The light can be adjusted separately, the integrated LED strip gives a special atmosphere while relaxing.

#### **CENTRAL LIGHTING**

All of the hot tubs have a central, underwater lighting, which lights the water of the entire spa.

















# MASSAGE OF WELLIS

## RELAX MASSAGE SEAT

It targets the regeneration of the shoulder girdle and the longitudinal trunk muscle tissues, as well as the hip flexor muscles and the knee extensor muscles – the muscle groups most exposed to everyday loads.

## EXPERT MASSAGE SEAT

Its adjustable jets can have physiological effects with customized directions and strength.

## COOL DOWN MASSAGE SEAT

The armchair design provides relaxation after training; its psychical and calming effect should be mentioned in addition to the recovery of physiological functions.

## FOCUS MASSAGE SEAT

It offers its user an experience similar to the Expert effect, relaxing the longitudinal trunk muscle tis-

ues, and passively exercising the hip and the thigh flexor and extensor muscle groups.

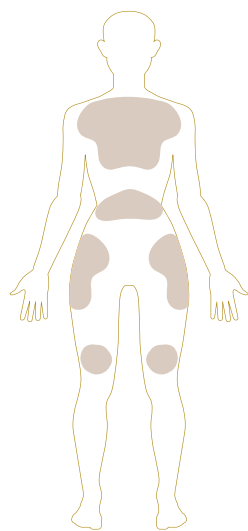
## BODY FLOW MASSAGE SEAT

The massage seat with the most intensive physiological effect; in addition to the trunk's muscle fibers, it also has effects on venous and lymphatic circulation in the lower limbs, in this way bringing relief to vein valves.

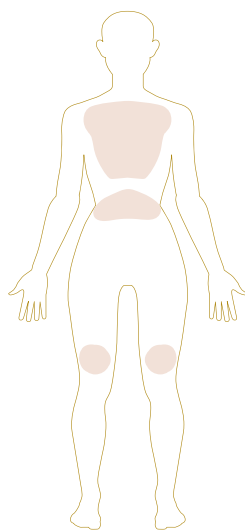
## INTENSO MASSAGE SEAT

The most refreshing massage seat. The favorite of professional athletes. After exhaustive and intensive training, it ensures the regeneration of the most critical areas, the back and leg muscles Relax

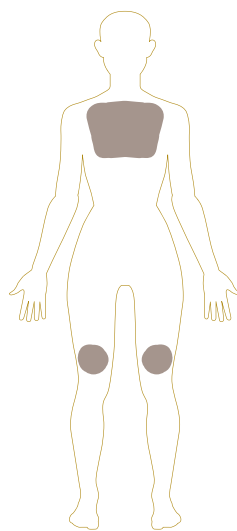
\* The layout of the jets may vary for each tub in the different seat designs.



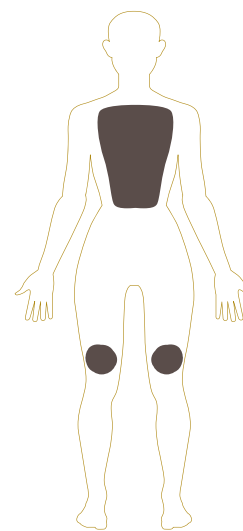
Relax massage



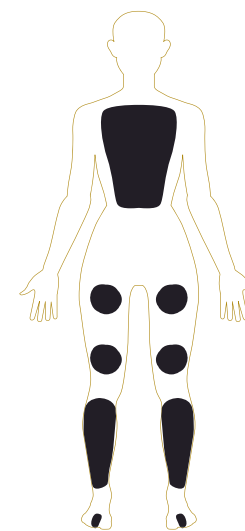
Expert massage



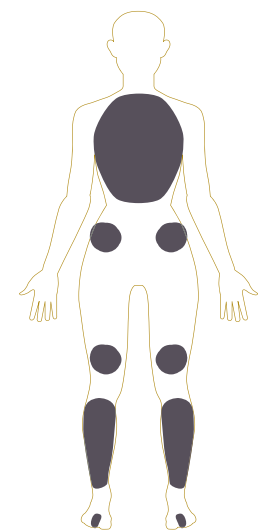
Cool down massage



Focus massage



Body flow massage



Intenso massage



# COLOURS OF WELLIS





### ACRYLIC COLOURS

We have a comprehensive range of 4 beautiful contemporary shades of acrylic for our spas that will harmonise with any setting – indoor or out: Sterling silver, Pearl white, Tuscan sun, Midnight canyon.

### CABINET COLOURS

No more sanding, oiling, and messy maintenance of a traditional timber cabinet. Our spa cabinets are made of a UV-resistant polymer material that looks as good as real wood but is entirely maintenance-free.

PeakLife spas have the new LightSide™-design cabinet is paired with vertical corner elements, giving elegance to the models. Available in grey and brown colors.

*PeakLife – LightSide™ Cabinet*



*CityLife – Horizont Side Cabinet*



# CONTROL PANELS

## **SMARTTOUCH CONTROL PANEL (PEAKLIFE)**

Full-featured keypad with color capacitive touch-screen display. Parting ways with physical buttons, keys, and overlays, our touchscreen keypad is fun to use, simple to learn and features an intuitive and engaging one-level menu interface.

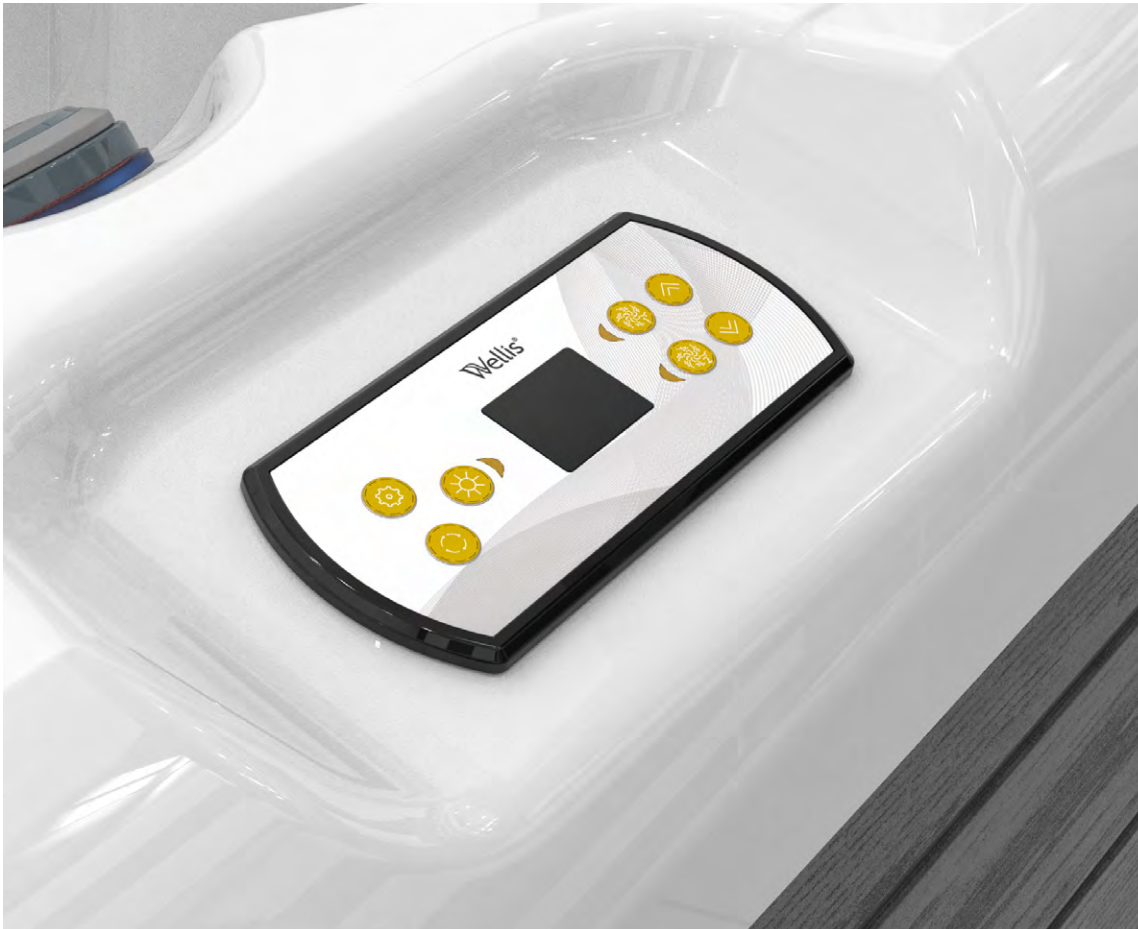
## **EASY7 CONTROL PANEL (CITYLIFE)**

The Wellis Easy7 brings all the features you really need to one keypad. Compact, with a big LCD screen;

bright enough to be seen throughout the day; simple enough to use in the middle of the night; affordable, yet solidly built.

## **AUXILIARY CONTROL PANELS (PEAKLIFE) 2 PIECES**

The one single button is also an auxiliary keypad designed to be installed as a second keypad on your spa. It allows you to activate the spa pump associated with its respective section.













# PEAK LIFE LINE



Everest Life  
Kilimanjaro Life  
Elbrus Life  
Teide Life  
Atlas Life  
Makalu Life  
Mandala Life  
Olympus Life





energy consumption  
**2.9**  
kWh / day\*

## EVEREST LIFE

2 360 × 2 360 × 950 mm  
2 reclining places, 3 sitting places





**Deluxe Edition**

Net weight / Water volume	452 kg / 1 382 l
Frame	WPS
Side cover	LightSide™ UV-proof wood textured
Reinforcement	Poli-MAX™
Insulation	Polyfoam (scandinavian 3.5 cm)
Total number of jets	68
∞ Infinity jets	6
Min / Opt. power requirement	25A / 3 x 16A - 400V / 50Hz
Pumps	1 x 3 HP + 1 x 3 HP double speed
Circulation pump	W-EC pump (0.25 kW)
WOW system	electronic water diverter
Heater	3 kW
Control box / panel	Gecko (IN.YE-5) / SmartTouch
Auxiliary control panel	2 x 1 buttons
Water sanitization	Ozmix™ system (Ozone + mixer)
Cartridge filter	3 x MicroPlus antibacterial
Flat fountain jets	2 x 1 lighting
Waterfall	1 lighting
Light-zone system	1 zone: Central lighting 2 zone: Rim lighting 3 zone: Cabinet & corner lighting
Sound system	Aquasoul™ Pro 4.1 hidden
Remote spa control	SmartPhone app with wifi connection
Thermo cover	standard - 12 cm

**Premium Edition**

WIS Inline system	built-in water analyzer
Light-zone system	lighting jets
3 kW heat pump	
Smart- In step prepared to heat pump location	

**Deluxe Edition Options**

3 kW heat pump
Smart- In step prepared to heat pump location

**Guarantee options**

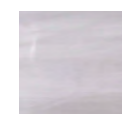
3 + 2 years for plumbing
3 + 4 years for plumbing



New lighting waterfall



New Intenso massage seat with infinity jets

**ACRYLIC**

Sterling silver



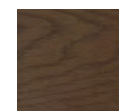
Tuscan sun



Alba pearl white



Midnight canyon

**SIDE COVER**

brown



grey

\* California Energy Commission data: water 39 °C, air 17 °C, filtering 1x2 hour. Based on Wellis measurements with heat pump.



energy consumption  
**2.9**  
kWh / day\*

## KILIMANJARO LIFE

2 360 × 2 360 × 950 mm  
1 reclining places, 5 sitting places





**Deluxe Edition**

<b>Net weight / Water volume</b>	454 kg / 1 450 l
<b>Frame</b>	WPS
<b>Side cover</b>	LightSide™ UV-proof wood textured
<b>Reinforcement</b>	Poli-MAX™
<b>Insulation</b>	Polyfoam (scandinavian 3.5 cm)
<b>Total number of jets</b>	59 jets
<b>∞ Infinity jets</b>	6
<b>Min / Opt. power requirement</b>	25A / 3 x 16A - 400V / 50Hz
<b>Pumps</b>	1 x 3 HP + 1 x 3 HP double speed
<b>Circulation pump</b>	W-EC pump (0.25 kW)
<b>WOW system</b>	electronic water diverter
<b>Heater</b>	3 kW
<b>Control box / panel</b>	Gecko (IN.YE-5) / SmartTouch
<b>Auxiliary control panel</b>	2 x 1 buttons
<b>Water sanitization</b>	Ozmix™ system (Ozone + mixer)
<b>Cartridge filter</b>	3 x MicroPlus antibacterial
<b>Flat fountain jets</b>	2 x 1 lighting
<b>Waterfall</b>	1 lighting
<b>Light-zone system</b>	1 zone: Central lighting 2 zone: Rim lighting 3 zone: Cabinet & corner lighting
<b>Sound system</b>	Aquasoul™ Pro 4.1 hidden
<b>Remote spa control</b>	SmartPhone app with wifi connection
<b>Thermo cover</b>	standard - 12 cm
<b>Premium Edition</b>	
<b>WIS Inline system</b>	built-in water analyzer
<b>Light-zone system</b>	lighting jets
<b>3 kW heat pump</b>	
<b>Smart- In step prepared to heat pump location</b>	

**Deluxe Edition Options**

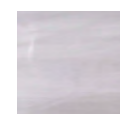
3 kW heat pump
Smart- In step prepared to heat pump location

**Guarantee options**

3 + 2 years for plumbing
3 + 4 years for plumbing



Infinity foot massage

Foot, calf and thigh massage  
in one reclining place**ACRYLIC**

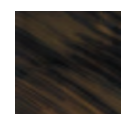
Sterling silver



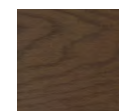
Tuscan sun



Alba pearl white



Midnight canyon

**SIDE COVER**

brown



grey

\* California Energy Commission data: water 39 °C, air 17 °C, filtering 1x2 hour. Based on Wellis measurements with heat pump.



energy consumption  
**2.9**  
kWh / day\*

## ELBRUS LIFE

2360 × 2360 × 950 mm  
7 sitting places





**Deluxe Edition**

Net weight / Water volume	452 kg / 1 500 l
Frame	WPS
Side cover	LightSide™ UV-proof wood textured
Reinforcement	Poli-MAX™
Insulation	Polyfoam (scandinavian 3.5 cm)
Total number of jets	61 jets
∞ Infinity jets	4
Min / Opt. power requirement	25A / 3 x 16A - 400V / 50H
Pumps	1 x 3 HP + 1 x 3 HP double speed
Circulation pump	W-EC pump (0.25 kW)
WOW system	electronic water diverter
Heater	3 kW
Control box / panel	Gecko (IN.YE-5) / SmartTouch
Auxiliary control panel	2 x 1 buttons
Water sanitization	Ozmix™ system (Ozone + mixer)
Cartridge filter	3 x MicroPlus antibacterial
Flat fountain jets	2 x 1 lighting
Waterfall	1 small, lighting
Light-zone system	1 zone: Central lighting 2 zone: Rim lighting 3 zone: Cabinet & corner lighting
Sound system	Aquasoul™ Pro 4.1 hidden
Remote spa control	SmartPhone app with wifi connection
Thermo cover	standard - 12 cm

**Premium Edition**

WIS Inline system	built-in water analyzer
Light-zone system	lighting jets
3 kW heat pump	
Smart- In step prepared to heat pump location	

**Deluxe Edition Options**

3 kW heat pump
Smart- In step prepared to heat pump location

**Guarantee options**

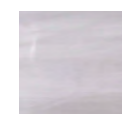
3 + 2 years for plumbing
3 + 4 years for plumbing



WellDome foot massage system



Hidden speakers with lighting

**ACRYLIC**

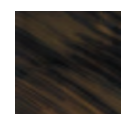
Sterling silver



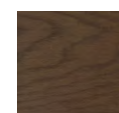
Tuscan sun



Alba pearl white



Midnight canyon

**SIDE COVER**

brown



grey

\* California Energy Commission data: water 39 °C, air 17 °C, filtering 1x2 hour. Based on Wellis measurements with heat pump.



energy consumption  
**2.7**  
kWh / day\*

## TEIDE LIFE

1 600x2 150x865 mm  
1 reclining place, 2 sitting places





**Deluxe Edition**

Net weight / Water volume	311 kg / 750 l
Frame	WPS
Side cover	LightSide™ UV-proof wood textured
Reinforcement	Poli-MAX™
Insulation	Polyfoam (scandinavian 3,5 cm)
Total number of jets	32
∞ Infinity jets	2
Min / Opt. power requirement	16A / 25A - 230V / 50Hz
Pumps	1 × 3 HP single speed
Circulation pump	W-EC pump (0.25 kW)
Heater	3 kW
Control box / panel	Gecko (IN.YE-3) / SmartTouch
Auxiliary control panel	-
Water sanitization	Ozmix™ system (Ozone + mixer)
Cartridge filter	2 × MicroPlus antibacterial
Flat fountain jets	2 × 1 lighting
Waterfall	-
Light-zone system	1 zone: Central and Rim lighting 2 zone: Corner lighting
Sound system	Aquasoul™ 2.1
Remote spa control	SmartPhone app with wifi connection
Thermo cover	standard - 12 cm

**Premium Edition**

WIS Inline system	built-in water analyzer
Light-zone system	lighting jets
3 kW heat pump	
Smart- In step prepared to heat pump location	

**Deluxe Edition Options**

3 kW heat pump
Smart- In step prepared to heat pump location

**Guarantee options**

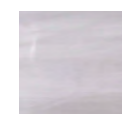
3 + 2 years for plumbing
3 + 4 years for plumbing



Waterproof speakers



Ultra soft pillows

**ACRYLIC**

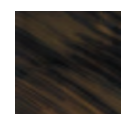
Sterling silver



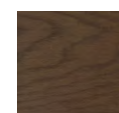
Tuscan sun



Alba pearl white



Midnight canyon

**SIDE COVER**

brown



grey

\* California Energy Commission data: water 39 °C, air 17 °C, filtering 1x2 hour. Based on Wellis measurements with heat pump.



energy consumption  
**3.4**  
kWh / day\*

## ATLAS LIFE

2 150 × 2 150 × 865 mm  
1 reclining place, 5 sitting places





**Deluxe Edition**

Net weight / Water volume	391 kg / 1 100 l
Frame	WPS
Side cover	LightSide™ UV-proof wood textured
Reinforcement	Poli-MAX™
Insulation	Polyfoam (scandinavian 3.5 cm)
Total number of jets	43
∞ Infinity jets	4
Min / Opt. power requirement	16A / 25A - 230V / 50Hz
Pumps	1 × 3 HP single speed
Circulation pump	W-EC pump (0.25 kW)
WOW system	electronic water diverter
Heater	3 kW
Control box / panel	Gecko (IN.YE-3) / SmartTouch
Auxiliary control panel	-
Water sanitization	Ozmix™ system (Ozone + mixer)
Cartridge filter	2 × MicroPlus antibacterial
Flat fountain jets	-
Waterfall	1 lighting
Light-zone system	1 zone: Central and Rim lighting 2 zone: Corner lighting
Sound system	Aquasoul™ 2.1
Remote spa control	SmartPhone app with wifi connection
Thermo cover	standard - 12 cm

**Premium Edition**

WIS Inline system	built-in water analyzer
Light-zone system	lighting jets
3 kW heat pump	
Smart- In step prepared to heat pump location	

**Deluxe Edition Options**

3 kW heat pump
Smart- In step prepared to heat pump location

**Guarantee options**

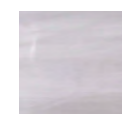
3 + 2 years for plumbing
3 + 4 years for plumbing



WOW system - electronic water diverter with pulsar function



High performance reclining place with infinity jets

**ACRYLIC**

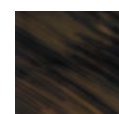
Sterling silver



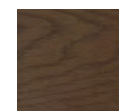
Tuscan sun



Alba pearl white



Midnight canyon

**SIDE COVER**

brown



grey

\* California Energy Commission data: water 39 °C, air 17 °C, filtering 1x2 hour. Based on Wellis measurements with heat pump.



energy consumption  
**3.4**  
kWh / day\*

## MAKALU LIFE

2 150 × 2 150 × 865 mm  
2 reclining place, 3 sitting places





**Deluxe Edition**

Net weight / Water volume	393 kg / 1 070 l
Frame	WPS
Side cover	LightSide™ UV-proof wood textured
Reinforcement	Poli-MAX™
Insulation	Polyfoam (scandinavian 3.5 cm)
Total number of jets	51
∞ Infinity jets	4
Min / Opt. power requirement	16A / 25A - 230V / 50Hz
Pumps	1 × 3 HP single speed
Circulation pump	W-EC pump (0.25 kW)
WOW system	electronic water diverter
Heater	3 kW
Control box / panel	Gecko (IN.YE-3) / SmartTouch
Auxiliary control panel	-
Water sanitization	Ozmix™ system (Ozone + mixer)
Cartridge filter	2 × MicroPlus antibacterial
Flat fountain jets	-
Waterfall	1 lighting
Light-zone system	1 zone: Central and Rim lighting 2 zone: Corner lighting
Sound system	Aquasoul™ 2.1
Remote spa control	SmartPhone app with wifi connection
Thermo cover	standard - 12 cm

**Premium Edition**

WIS Inline system	built-in water analyzer
Light-zone system	lighting jets
3 kW heat pump	
Smart- In step prepared to heat pump location	

**Deluxe Edition Options**

3 kW heat pump
Smart- In step prepared to heat pump location

**Guarantee options**

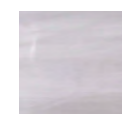
3 + 2 years for plumbing
3 + 4 years for plumbing



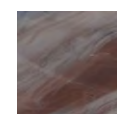
Ultra soft pillows



New Wellis Crystal System

**ACRYLIC**

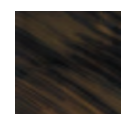
Sterling silver



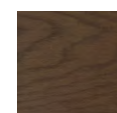
Tuscan sun



Alba pearl white



Midnight canyon

**SIDE COVER**

brown



grey

\* California Energy Commission data: water 39 °C, air 17 °C, filtering 1x2 hour. Based on Wellis measurements with heat pump.



energy consumption  
**3.4**  
kWh / day\*

## MANDALA LIFE

2 150 × 2 150 × 865 mm  
7 sitting places





**Deluxe Edition**

Net weight / Water volume	388 kg / 1 125 l
Frame	WPS
Side cover	LightSide™ UV-proof wood textured
Reinforcement	Poli-MAX™
Insulation	Polyfoam (scandinavian 3.5 cm)
Total number of jets	46 jets
∞ Infinity jets	2
Min / Opt. power requirement	16A / 25A - 230V / 50Hz
Pumps	1 × 3 HP single speed
Circulation pump	W-EC pump (0.25 kW)
WOW system	electronic water diverter
Heater	3 kW
Control box / panel	Gecko (IN.YE-3) / SmartTouch
Auxiliary control panel	-
Water sanitization	Ozmix™ system (Ozone + mixer)
Cartridge filter	2 × MicroPlus antibacterial
Flat fountain jets	-
Waterfall	2 small, lighting
Light-zone system	1 zone: Central and Rim lighting 2 zone: Corner lighting
Sound system	Aquasoul™ 2.1
Remote spa control	SmartPhone app with wifi connection
Thermo cover	standard - 12 cm

**Premium Edition**

WIS Inline system	built-in water analyzer
Light-zone system	lighting jets
3 kW heat pump	
Smart- In step prepared to heat pump location	

**Deluxe Edition Options**

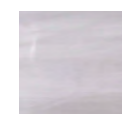
3 kW heat pump
Smart- In step prepared to heat pump location

**Guarantee options**

3 + 2 years for plumbing
3 + 4 years for plumbing



2 lighting waterfall

2 infinity jets  
and intensive neck massage**ACRYLIC**

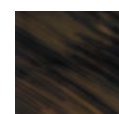
Sterling silver



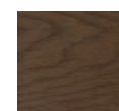
Tuscan sun



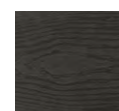
Alba pearl white



Midnight canyon

**SIDE COVER**

brown



grey

\* California Energy Commission data: water 39 °C, air 17 °C, filtering 1x2 hour. Based on Wellis measurements with heat pump.



energy consumption  
**6.4**  
kWh / day\*

## OLYMPUS LIFE

3 540 × 2 300 × 980 mm  
2 reclining places, 7 sitting places





<b>Net weight / Water volume</b>	900 kg / 2 331 l
<b>Frame</b>	Stainless steel
<b>Side cover</b>	HorizontSide™ UV-proof wood textured
<b>Reinforcement</b>	Fiberglass reinforced
<b>Total number of jets</b>	88
<b>Opt. power requirement</b>	3 × 25A / 400V / 50Hz
<b>Min. power requirement*</b>	3 × 16A / 400V / 50Hz
<b>Pumps</b>	1 × 3 HP, double speed 2 × 2 HP single speed 1 × 3 HP, single speed
<b>Circulation pump</b>	1 × 1.25 HP (1,1 kW)
<b>Heater</b>	3 kW
<b>Control box / panel</b>	Gecko (IN.YT-8) / SmartTouch
<b>Auxiliary control panel</b>	1 × 1 button + 1 × 4 buttons
<b>Water sanitization</b>	Ozmix™ System
<b>Cartridge filter</b>	1 × Superfine
<b>Laminar fountain jets</b>	2 × 1 lighting
<b>Waterfall</b>	1 × lighting
<b>Led lights</b>	20 × exclusive LEDs + lighting jets
<b>Sound system</b>	Aquasoul™ Pro 4.1 Pop-Up
<b>Aromatic therapy</b>	Liquid Aroma (without fragrance)
<b>SmartPhone app - wifi connection</b>	standard
<b>Scandinavian Insulation</b>	standard
<b>Heat exchanger preparation</b>	standard

### Options

3 kW heat pump

Smart- In step prepared to heat pump location

### Guarantee options

3 + 2 years for plumbing

3 + 4 years for plumbing

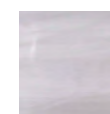


7 sitting places



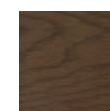
Body flow and Intenso reclining place

### ACRYLIC

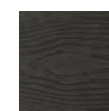


Sterling silver

### SIDE COVER



brown



grey

\* California Energy Commission data: water 39 °C, air 17 °C, filtering 1x2 hour. Based on Wellis measurements with heat pump.





**Life**



# CITYLIFE LINE



Palermo Life  
Malaga Life  
Lima Life  
Manhattan Life  
Budapest Life  
Prague Life  
Lugano Life  
Vienna Life





*energy consumption*  
**3.4**  
kWh / day\*

## PALERMO LIFE

2 180 × 2 180 × 900 mm  
2 reclining places, 3 sitting place





**Deluxe Edition**

Net weight / Water volume	335 kg / 1 175 l
Frame	WPS
Side cover	HorizontSide™ UV-proof with W-Side corner
Reinforcement	Poli-MAX™
Insulation	Polyfoam (scandinavian 3.5 cm)
Total number of jets	42 jets
Min / Opt. power requirement	25A / 3 x 16A - 230V / 50Hz
Pumps	2 x 3 HP - single speed
Circulation pump	W-EC pump (0.25 kW)
WOW system	-
Heater	3 kW
Control box / panel	Gecko (IN.YE-3) / Easy7
Auxiliary control panel	-
Water sanitization	Ozmix™ system (Ozone + mixer)
Cartridge filter	1 x Superfine
Flat fountain jets	2 x 1 lighting
Waterfall	1 small, lighting
Light-zone system	1 zone: Exclusive spot and Rim lighting
Sound system	MyMusic™ 2.0
Remote spa control	SmartPhone app with wifi connection
Thermo cover	standard - 12 cm

**Premium Edition**

3 kW heat pump
Smart- In step prepared to heat pump location

**Deluxe Edition Options**

3 kW heat pump
Smart- In step prepared to heat pump location

**Guarantee options**

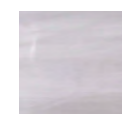
3 + 2 years for plumbing
3 + 4 years for plumbing



Neck massage



Soft pillows

**ACRYLIC**

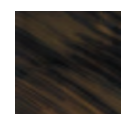
Sterling silver



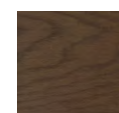
Tuscan sun



Alba pearl white



Midnight canyon

**SIDE COVER**

brown



grey

\* California Energy Commission data: water 39 °C, air 17 °C, filtering 1x2 hour. Based on Wellis measurements with heat pump.



energy consumption  
**3.4**  
kWh / day\*

## MALAGA LIFE

2 180 × 2 180 × 900 mm  
1 reclining place, 5 sitting places





**Deluxe Edition**

Net weight / Water volume	335 kg / 1 200 l
Frame	WPS
Side cover	HorizontSide™ UV-proof with W-Side corner
Reinforcement	Poli-MAX™
Insulation	Polyfoam (scandinavian 3.5 cm)
Total number of jets	40 jets
Min / Opt. power requirement	25A / 3 x 16A - 230V / 50Hz
Pumps	2 x 3 HP - single speed
Circulation pump	W-EC pump (0.25 kW)
WOW system	-
Heater	3 kW
Control box / panel	Gecko (IN.YE-3) / Easy7
Auxiliary control panel	-
Water sanitization	Ozmix™ system (Ozone + mixer)
Cartridge filter	1 x Superfine
Flat fountain jets	3 x 1 lighting
Waterfall	1 small, lighting
Light-zone system	1 zone: Exclusive spot and Rim lighting
Sound system	MyMusic™ 2.0
Remote spa control	SmartPhone app with wifi connection
Thermo cover	standard - 12 cm

**Premium Edition**

3 kW heat pump
Smart- In step prepared to heat pump location

**Deluxe Edition Options**

3 kW heat pump
Smart- In step prepared to heat pump location

**Guarantee options**

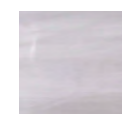
3 + 2 years for plumbing
3 + 4 years for plumbing



Neck massage



Body flow massage seat

**ACRYLIC**

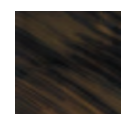
Sterling silver



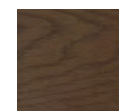
Tuscan sun



Alba pearl white



Midnight canyon

**SIDE COVER**

brown



grey

\* California Energy Commission data: water 39 °C, air 17 °C, filtering 1x2 hour. Based on Wellis measurements with heat pump.



energy consumption  
**3.4**  
kWh / day\*

## LIMA LIFE

2180 × 2180 × 900 mm  
7 sitting places





**Deluxe Edition**

Net weight / Water volume	335 kg / 1 300 l
Frame	WPS
Side cover	HorizontSide™ UV-proof with W-Side corner
Reinforcement	Poli-MAX™
Insulation	Polyfoam (scandinavian 3.5 cm)
Total number of jets	40 jets
Min / Opt. power requirement	25A / 3 x 16A - 230V / 50Hz
Pumps	2 x 3 HP - single speed
Circulation pump	W-EC Pump (0.25 kW)
WOW system	-
Heater	3 kW
Control box / panel	Gecko (IN.YE-3) / Easy7
Auxiliary control panel	-
Water sanitization	Ozmix™ system (Ozone + mixer)
Cartridge filter	1 x Superfine
Flat fountain jets	2 x 1 lighting
Waterfall	1 small, lighting
Light-zone system	1 zone: Exclusive spot and Rim lighting
Sound system	MyMusic™ 2.0
Remote spa control	SmartPhone app with wifi connection
Thermo cover	standard - 12 cm

**Premium Edition**

3 kW heat pump
Smart- In step prepared to heat pump location

**Deluxe Edition Options**

3 kW heat pump
Smart- In step prepared to heat pump location

**Guarantee options**

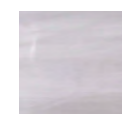
3 + 2 years for plumbing
3 + 4 years for plumbing



Lighting waterfall



Neck massage

**ACRYLIC**

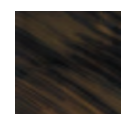
Sterling silver



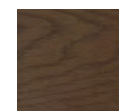
Tuscan sun



Alba pearl white



Midnight canyon

**SIDE COVER**

brown



grey

\* California Energy Commission data: water 39 °C, air 17 °C, filtering 1x2 hour. Based on Wellis measurements with heat pump.



energy consumption  
**2.7**  
kWh / day\*

## MANHATTAN LIFE

2010 × 1530 × 850 mm  
1 reclining place, 2 sitting places





**Deluxe Edition**

Net weight / Water volume	280 kg / 560 l
Frame	WPS
Side cover	HorizontSide™ UV-proof with W-Side corner
Reinforcement	Poli-MAX™
Insulation	Polyfoam (scandinavian 3.5 cm)
Total number of jets	30 jets
Min / Opt. power requirement	16A / 25A - 230V / 50Hz
Pumps	1 × 3 HP - single speed
Circulation pump	W-EC pump (0.25 kW)
WOW system	-
Heater	3 kW
Control box / panel	Gecko (IN.YE-3) / Easy7
Auxiliary control panel	-
Water sanitization	Ozmix™ system (Ozone + mixer)
Cartridge filter	1 × Superfine
Flat fountain jets	2 × 1 lighting
Waterfall	-
Light-zone system	1 zone: Exclusive spot and Rim lighting
Sound system	MyMusic™ 2.0
Remote spa control	SmartPhone app with wifi connection
Thermo cover	standard - 12 cm

**Premium Edition**

3 kW heat pump
Smart- In step prepared to heat pump location

**Deluxe Edition Options**

3 kW heat pump
Smart- In step prepared to heat pump location

**Guarantee options**

3 + 2 years for plumbing
3 + 4 years for plumbing



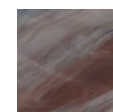
Neck massage



Lighting fountains

**ACRYLIC**

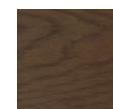
Sterling silver



Tuscan sun



Alba pearl white

**SIDE COVER**

brown



grey

\* California Energy Commission data: water 39 °C, air 17 °C, filtering 1x2 hour. Based on Wellis measurements with heat pump.



energy consumption  
**3.4**  
kWh / day\*

## BUDAPEST LIFE

2 000 × 2 000 × 890 mm  
2 reclining place, 3 sitting places





**Deluxe Edition**

Net weight / Water volume	236 kg / 1 100 l
Frame	WPS
Side cover	HorizontSide™ UV-proof with W-Side corner
Reinforcement	Poli-MAX™
Insulation	Polyfoam (scandinavian 3.5 cm)
Total number of jets	42 jets
Min / Opt. power requirement	16A / 25A - 230V / 50Hz
Pumps	1 × 3 HP - single speed
Circulation pump	W-EC pump (0.25 kW)
WOW system	-
Heater	3 kW
Control box / panel	Gecko (IN.YE-3) / Easy7
Auxiliary control panel	-
Water sanitization	Ozmix™ system (Ozone + mixer)
Cartridge filter	1 × Superfine
Flat fountain jets	-
Waterfall	-
Light-zone system	1 zone: Exclusive spot and Rim lighting
Sound system	MyMusic™ 2.0
Remote spa control	SmartPhone app with wifi connection
Thermo cover	standard - 12 cm

**Premium Edition**

3 kW heat pump
Smart- In step prepared to heat pump location

**Deluxe Edition Options**

3 kW heat pump
Smart- In step prepared to heat pump location

**Guarantee options**

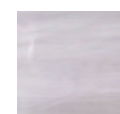
3 + 2 years for plumbing
3 + 4 years for plumbing



Focus reclining place



Foot massage for 3 person

**ACRYLIC**

Sterling silver



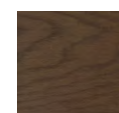
Tuscan sun



Alba pearl white



Midnight canyon

**SIDE COVER**

brown



grey

\* California Energy Commission data: water 39 °C, air 17 °C, filtering 1x2 hour. Based on Wellis measurements with heat pump.



energy consumption  
**3.4**  
kWh / day\*

## PRAGUE LIFE

2000 × 2000 × 900 mm  
1 reclining places, 5 sitting places





**Deluxe Edition**

Net weight / Water volume	226 kg / 1 200 l
Frame	WPS
Side cover	HorizontSide™ UV-proof with W-Side corner
Reinforcement	Poli-MAX™
Insulation	Polyfoam (scandinavian 3.5 cm)
Total number of jets	50 jets
Min / Opt. power requirement	16A /25A - 230V / 50Hz
Pumps	1 × 3 HP - single speed
Circulation pump	W-EC pump (0.25 kW)
WOW system	-
Heater	3 kW
Control box / panel	Gecko (IN.YE-3) / Easy7
Auxiliary control panel	-
Water sanitization	Ozmix™ system (Ozone + mixer)
Cartridge filter	1 × Superfine
Flat fountain jets	2 × 1 lighting
Waterfall	-
Light-zone system	1 zone: Exclusive spot and Rim lighting
Sound system	MyMusic™ 2.0
Remote spa control	SmartPhone app with wifi connection
Thermo cover	standard - 12 cm

**Premium Edition**

3 kW heat pump
Smart- In step prepared to heat pump location

**Deluxe Edition Options**

3 kW heat pump
Smart- In step prepared to heat pump location

**Guarantee options**

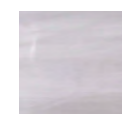
3 + 2 years for plumbing
3 + 4 years for plumbing



Focus massage seat



Intensive calf massage

**ACRYLIC**

Sterling silver



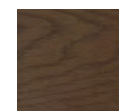
Tuscan sun



Alba pearl white



Midnight canyon

**SIDE COVER**

brown



grey

\* California Energy Commission data: water 39 °C, air 17 °C, filtering 1x2 hour. Based on Wellis measurements with heat pump.



## FIRENZE LIFE

2130 × 1600 × 750 mm  
2 reclining places, 1 sitting places



**Deluxe Edition**

Net weight / Water volume	175 kg / 685 l
Frame	WPS
Side cover	HorizontSide™ UV-proof with W-Side corner
Reinforcement	Poli-MAX™
Insulation	Polyfoam (scandinavian 3.5 cm)
Total number of jets	37 jets
Min / Opt. power requirement	16A /25A - 230V / 50Hz
Pumps	1 × 2 HP - single speed
Circulation pump	W-EC pump (0.25 kW)
WOW system	-
Heater	3 kW
Control box / panel	Gecko (IN.YE-3) / Easy7
Auxiliary control panel	-
Water sanitization	Ozmix™ system (Ozone + mixer)
Cartridge filter	1 × MicroPlus antibacterial
Flat fountain jets	-
Waterfall	-
Light-zone system	1 zone: Exclusive spot and Rim lighting
Sound system	MyMusic™ 2.0
Remote spa control	SmartPhone app with wifi connection
Thermo cover	standard - 12 cm

**Deluxe Edition Options**

3 kW heat pump
Smart- In step prepared to heat pump location

**Guarantee options**

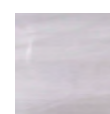
3 + 2 years for plumbing
3 + 4 years for plumbing



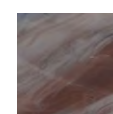
Focus massage seat



Intensive calf massage

**ACRYLIC**

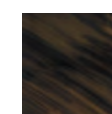
Sterling silver



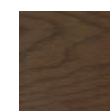
Tuscan sun



Alba pearl white



Midnight canyon

**SIDE COVER**

brown



grey



energy consumption  
**3.4**  
kWh / day\*

## LUGANO LIFE

2 300 × 2 300 × 900 mm  
1 reclining places, 5 sitting places





**Deluxe Edition**

Net weight / Water volume	387 kg / 1 400 l
Frame	WPS
Side cover	HorizontSide™ UV-proof wood textured
Reinforcement	Poli-MAX™
Insulation	Polyfoam (scandinavian 3.5 cm)
Total number of jets	52 jets
Min / Opt. power requirement	25A / 3 x 16A - 230V / 50Hz
Pumps	2 x 3 HP - single speed
Circulation pump	W-EC pump (0.25 kW)
WOW system	-
Heater	3 kW
Control box / panel	Gecko (IN.YE-3) / Easy7
Auxiliary control panel	-
Water sanitization	Ozmix™ system (Ozone + mixer)
Cartridge filter	3 x Superfine
Flat fountain jets	2 x 1 lighting
Waterfall	-
Light-zone system	1 zone: Exclusive spot and Rim lighting
Sound system	MyMusic™ 2.0
Remote spa control	SmartPhone app with wifi connection
Thermo cover	standard - 12 cm

**Premium Edition**

3 kW heat pump
Smart- In step prepared to heat pump location

**Deluxe Edition Options**

3 kW heat pump
Smart- In step prepared to heat pump location

**Guarantee options**

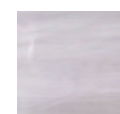
3 + 2 years for plumbing
3 + 4 years for plumbing



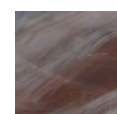
Focus massage seat



Intenso massage seat

**ACRYLIC**

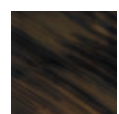
Sterling silver



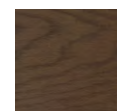
Tuscan sun



Alba pearl white



Midnight canyon

**SIDE COVER**

brown



grey

\* California Energy Commission data: water 39 °C, air 17 °C, filtering 1x2 hour. Based on Wellis measurements with heat pump.



energy consumption  
**3.4**  
kWh / day\*

## VIENNA LIFE

2 300 × 2 300 × 900 mm  
7 sitting places





**Deluxe Edition**

Net weight / Water volume	226 kg / 1 300 l
Frame	WPS
Side cover	HorizontSide™ UV-proof wood textured
Reinforcement	Poli-MAX™
Insulation	Polyfoam (scandinavian 3.5 cm)
Total number of jets	62 jets
Min / Opt. power requirement	25A / 3 x 16A - 230V / 50Hz
Pumps	2 x 3 HP - single speed
Circulation pump	W-EC pump (0.25 kW)
WOW system	-
Heater	3 kW
Control box / panel	Gecko (IN.YE-3) / Easy7
Auxiliary control panel	-
Water sanitization	Ozmix™ system (Ozone + mixer)
Cartridge filter	3 x Superfine
Flat fountain jets	2 x 1 lighting
Waterfall	-
Light-zone system	1 zone: Exclusive spot and Rim lighting
Sound system	MyMusic™ 2.0
Remote spa control	SmartPhone app with wifi connection
Thermo cover	standard - 12 cm

**Premium Edition**

3 kW heat pump
Smart- In step prepared to heat pump location

**Deluxe Edition Options**

3 kW heat pump
Smart- In step prepared to heat pump location

**Guarantee options**

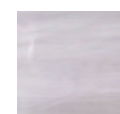
3 + 2 years for plumbing
3 + 4 years for plumbing



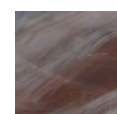
Intensive hip massage



Wellis Dome

**ACRYLIC**

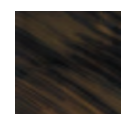
Sterling silver



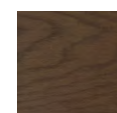
Tuscan sun



Alba pearl white



Midnight canyon

**SIDE COVER**

brown



grey

\* California Energy Commission data: water 39 °C, air 17 °C, filtering 1x2 hour. Based on Wellis measurements with heat pump.





 Life



# SWIMLIFE LINE



Rio Grande Life  
Amazonas Life  
Danube Life



## RIO GRANDE LIFE

6 000 × 2 350 × 1 470 mm  
1 reclining places, 4 sitting places



<b>Net weight / Water volume</b>	1 300 kg / 6 600 l
<b>Frame</b>	Stainless steel
<b>Side cover</b>	HorizontSide™ or semi-inground
<b>Reinforcement</b>	Fiberglass reinforced
<b>Total number of jets</b>	40
<b>Opt. power requirement (hydro m.)</b>	1 × 40A / 230V / 50Hz
<b>Min. power requirement*</b>	1 × 20A / 230V / 50Hz
<b>Opt. power req.</b>	W-flow: 3 × 16A / 400V / 50Hz, Turbine: 1 × 32A / 230V / 50Hz
<b>Min. power req.* (swim spa)</b>	W-flow: 1 × 35A / 230V / 50Hz, Turbine: 1 × 25A / 230V / 50Hz
<b>Pumps (hydro massage)</b>	2 × 3 HP, single speed + circ. pump (0.25 kW),
<b>Pumps (swim spa)</b>	3 × 3 HP, double speed / Turbine + circ. pump (1.1 kW)
<b>Heater</b>	2 × 3 kW
<b>Control box / panel</b>	Gecko (IN.YE-3 + IN.YE-8) / 2 × SmartTouch
<b>Auxiliary control panel</b>	-
<b>Water sanitization</b>	Ozmix™ System
<b>Cartridge filter</b>	1 + 2 Superfine
<b>Laminar fountain jets</b>	3 + 6 lighting
<b>Waterfall</b>	1 × lighting
<b>Led lights</b>	2 × 16 exclusive LEDs + illuminated control valves
<b>Sound system</b>	AquaSoul™ Pro 4.1
<b>Aromatic therapy</b>	Liquid Aroma (without fragrance)
<b>SmartPhone app - wifi connection</b>	standard
<b>Scandinavian insulation</b>	standard
<b>Heat exchanger preparation</b>	standard
<b>Swimming stick</b>	standard

### Options

3 kW heat pump

### Guarantee options

3 + 2 years for plumbing

3 + 4 years for plumbing



W-flow system



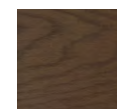
Turbine system

### ACRYLIC



Sterling silver

### SIDE COVER

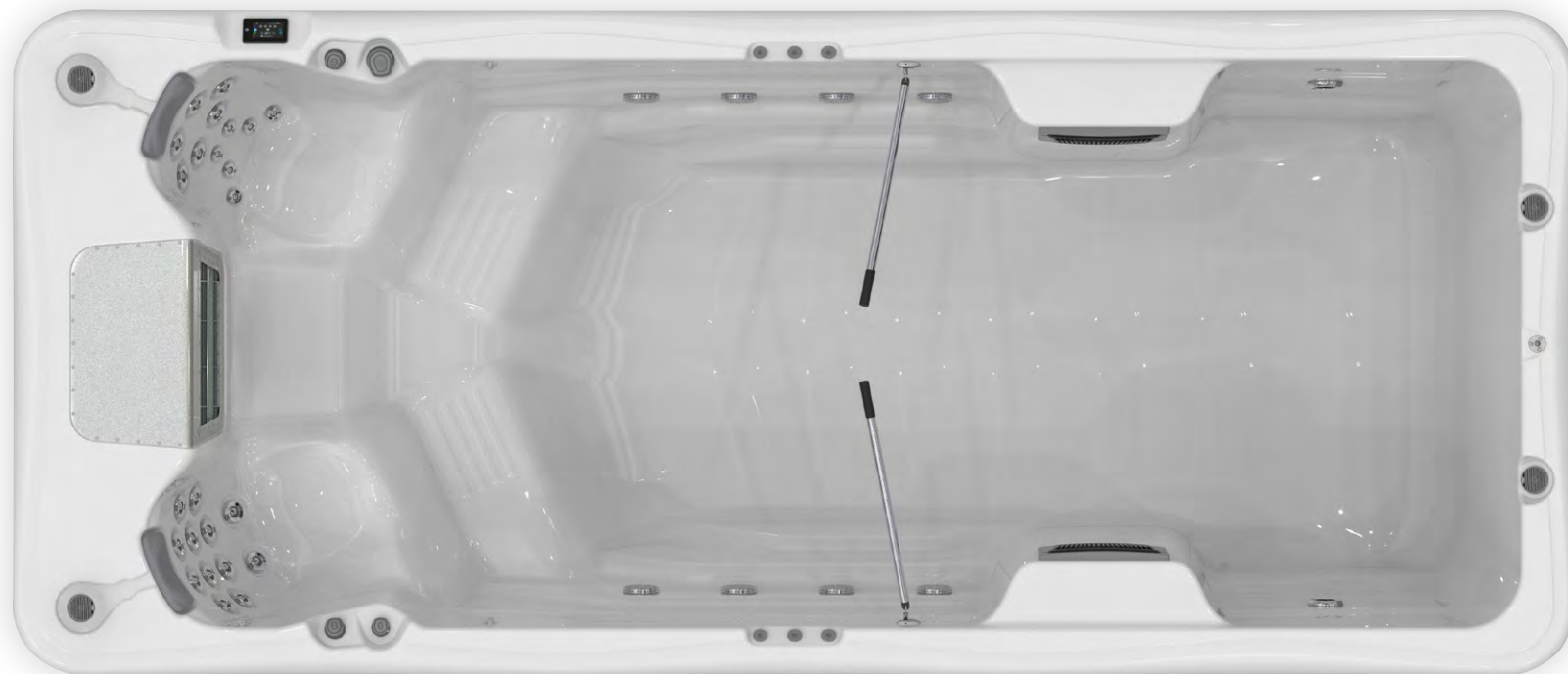


brown



grey

\* If the minimum current is connected, the massage motor(s) and the heating unit cannot be operated at the same time.



## AMAZONAS LIFE

5 500 × 2 350 × 1 470 mm  
2 sitting places





<b>Net weight / Water volume</b>	1 250 kg / 8 000 l
<b>Frame</b>	Stainless steel
<b>Side cover</b>	HorizontSide™ or semi-inground
<b>Reinforcement</b>	Fiberglass reinforced
<b>Total number of jets</b>	27
<b>Opt. power requirement</b>	W-flow: 3 × 20A / 400V / 50Hz, Turbine: 3 × 16A / 400V / 50Hz
<b>Min. power requirement*</b>	W-flow: 1 × 35A / 230V / 50Hz, Turbine: 1 × 20A / 230V / 50Hz
<b>Pumps (hydro massage)</b>	1 × 3 HP, single speed + circ. pump (1.1 kW)
<b>Pumps (swim spa)</b>	3 × 3 HP, double speed / Turbine
<b>Heater</b>	3 kW
<b>Control box / panel</b>	Gecko (IN.YE-8) / SmartTouch
<b>Auxiliary control panel</b>	-
<b>Water sanitization</b>	Ozmix™ System
<b>Cartridge filter</b>	4 × Superfine
<b>Laminar fountain jets</b>	2 × 3 lighting
<b>Waterfall</b>	-
<b>Led lights</b>	1 × 25 exclusive LEDs + illuminated control valves
<b>Sound system</b>	AquaSoul™ Pro 4.1
<b>Aromatic therapy</b>	-
<b>SmartPhone app - wifi connection</b>	standard
<b>Scandinavian insulation</b>	standard
<b>Heat exchanger preparation</b>	standard
<b>Swimming stick</b>	standard

### Options

3 kW heat pump

### Guarantee options

3 + 2 years for plumbing

3 + 4 years for plumbing

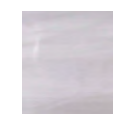


W-flow system



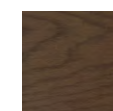
Turbine system

### ACRYLIC

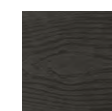


Sterling silver

### SIDE COVER



brown



grey

\* If the minimum current is connected, the massage motor(s) and the heating unit cannot be operated at the same time.



## DANUBE LIFE

4 500 × 2 350 × 1 470 mm  
2 sitting places





<b>Net weight / Water volume</b>	1 047 kg / 5 913 l
<b>Frame</b>	Stainless steel
<b>Side cover</b>	HorizontSide™ or semi-inground
<b>Reinforcement</b>	Fiberglass reinforced
<b>Total number of jets</b>	24
<b>Opt. power requirement</b>	W-flow: 3 × 20A / 400V / 50Hz, Turbine: 3 × 16A / 400V / 50Hz
<b>Min. power requirement*</b>	W-flow: 3 × 16A / 400V / 50Hz, Turbine: 1 × 20A / 230V / 50Hz
<b>Pumps (hydromassage)</b>	1 × 3 HP, single speed + circ. pump
<b>Pumps (swim spa)</b>	3 × 3 HP, double speed / Turbine
<b>Heater</b>	3 kW
<b>Control box / panel</b>	Gecko (IN.YE-8) / SmartTouch
<b>Auxiliary control panel</b>	-
<b>Water sanitization</b>	Ozmix™ System
<b>Cartridge filter</b>	2 × Superfine
<b>Laminar fountain jets</b>	2 × 3 lighting
<b>Waterfall</b>	-
<b>Led lights</b>	18 × exclusive LEDs + illuminated control valves
<b>Sound system</b>	AquaSoul™ Pro 4.1
<b>Aromatic therapy</b>	-
<b>SmartPhone app - wifi connection</b>	standard
<b>Scandinavian insulation</b>	standard
<b>Heat exchanger preparation</b>	standard
<b>Swimming stick</b>	standard

### Options

3 kW heat pump

### Guarantee options

3 + 2 years for plumbing

3 + 4 years for plumbing



W-flow system



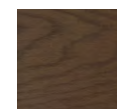
Turbine system

### ACRYLIC



Sterling silver

### SIDE COVER



brown



grey

\* If the minimum current is connected, the massage motor(s) and the heating unit cannot be operated at the same time.



Wellis®

The products included in the catalogue are for illustration purposes only, and may not always match the specifications of the advertised product. Wellis reserves the right to modify the products – including the product range – without prior notice, since they are valid at the time they are delivered to the printing press. We may not be made responsible for printing errors.

MAR1190

[wellis.com](http://wellis.com)